

IMEB

International Music Examinations Board

Patron: The Hon Bronwyn Bishop

255 Broadway, Glebe, NSW 2037

Ph: 61 2 9518 5123 Fax: 61 2 9518 4649

Email: enquiries@imeb.com.au

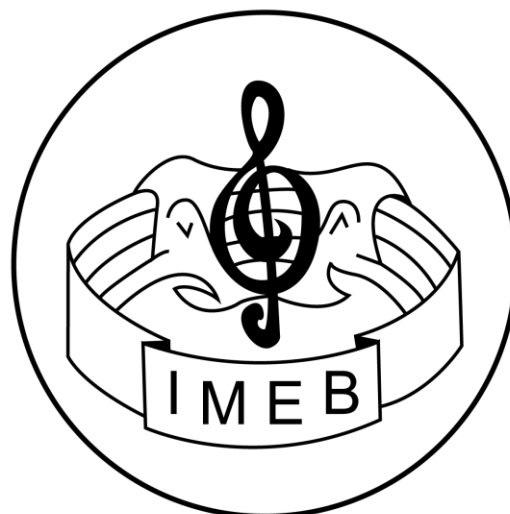
Website: www.imeb.com.au

NEWSLETTER : February 2013

Greetings to all.... And a belated happy new year to all. To our horror it is February already and the school and studio term have already begun to swing into action. This has been brought home to us very swiftly with requests already received for IMEB exam dates.



As you will know, and can see from the address, IMEB relocated during 2012 to new premises in the city. This fine building has been renovated very tastefully and accommodates the Australian Performing Arts Grammar School (APGS) and the IMEB Office. It is very central and convenient for public transport ... Buses from Town Hall or Central Station, which travel along Parramatta Road and Broadway, stop exactly opposite this building at 'Victoria Park'. Buses travelling to Glebe Point stop on this corner. There is also free 3 hour parking in the Broadway Shopping Centre situated behind this building.



We enjoyed a very successful Promotion and Launching of IMEB in South Australia in October and our thanks to Tony Vance and Alan West for that particular event. We are now recognized by the SA Department of Education for IMEB exam results to be included in the SA High School Certificate. Kerin Bailey, the Australian composer, was the Guest of Honour and delighted the audience with a performance of some of his compositions.



Our thanks to all those who promote IMEB among their networks. Meanwhile our IMEB entry numbers are growing at a steady rate. Our expansion into SE Asia continues to grow soundly.

Additional S and D exam: To answer requests from a number of teachers, we have introduced a Nursery Level exam for Pre-Schoolers to be posted on the website

Fees: to answer your regular enquiries about annual IMEB examination fees: they have remained static over recent years, however as previously flagged, a **small** increase is now in place as you will see from the enclosed new fees schedule. The running costs continue to escalate. However, the hours of voluntary work by Tim and Darrell will ensure that the fees will still be lower than other exam systems. We are happy to contribute our time to IMEB (often clocking up about 30 hours each per week either here at the Office or at our homes) and we are rewarded by the outstanding success of the IMEB.

Reminder: IMEB Diploma of Music Students You may apply to St Cecilia's School of Music (SCSM) on payment of a fee for an equivalent Diploma from that examination organization. Enquiries should be made to:

Mr Mathews Tyson (Director),
SCSM Examinations,
PO Box 938,
Launceston,
Tasmania 7250
Ph: 03 6331 7343

Examination Entry form: please ensure that the latest version of this form is used. It is enclosed with this Newsletter and is available on the website. Several entries last year arrived in a variety of formats and highly individual spreadsheet styles which did not indicate the required information re Grades, Performance, Levels, Teaching or Performing Diplomas etc. You may either complete this official, preferred Entry form by hand or as many of you already do, scan it into your computer and type in the entry details. We do not mind whether it is hand-written or word-processed as long as it contains the required info and detail, clearly and correctly spelt. The IMEB Office holds a data base to correspond to the Entry Form and we have had difficulty trying to reconcile the info sent in different formats. Often it has been necessary to phone studios to seek clarification.

PRACTICAL Exams for both Series 1 and 2 are by arrangement as usual with IMEB Office. Closing dates as per Entry form **Series1: 1 May. Series 2: 1 October.** **PRACTICAL Exams:** may be arranged with the IMEB by teachers. Once again may we ask you to avoid requesting specific dates. Please give us an indication of preferred weeks or time frame as early as possible. (Most of you continue to do this superbly) and we will do our best to accommodate your wishes as usual.

THEORY Exams Series 1: 2013: Due to the change of location of IMEB HQ, the upcoming Theory Exams will be held on **Saturday 4 May** at 255 Broadway, Glebe and will commence at 9.30am. **Please arrive 15 mins before the starting time of 9.30am** and make your way to Floor 3 via the lift at 255 Broadway. Please do not arrive or try to enter the building before 9.15am. Country exams as usual are to be organized by the Supervisor. **PLEASE NOTE** that exams will now be held on **Saturday mornings** to prevent the candidates taking time out from school or work and to fit in with the schedule of the High School whose facilities we use for Theory exams. **Closing date : 1 May** (as per Entry form)

THEORY Exam Series 2: 2013: Saturday 7 September 9.30am, at 255 Broadway, Glebe. Details as above. **Closing date: 1 August** (as per Entry form)

Please advise IMEB as early as possible of supervisor's name and address for mailing of Theory exam papers.

Closing Dates: for all examinations must be strictly observed. There appears to be the perception that because we aim to be flexible and considerate to individual needs, we will accede to any requests and rules need not necessarily be complied with. Due to the huge increase in entries, we are unable to arrange alternative dates. Please understand our position.

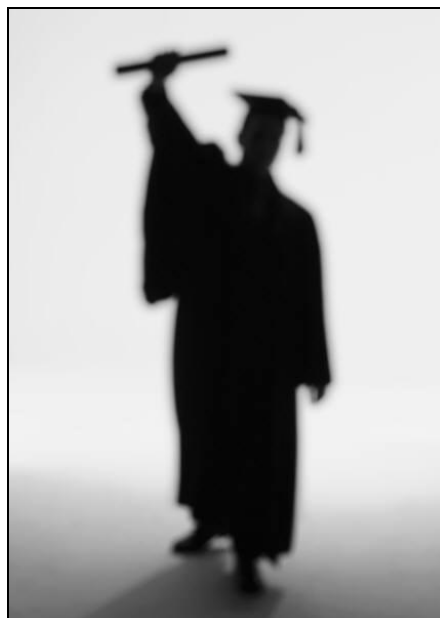
NB: requests for both Theory and Practical exam to be taken outside the designated time/date cannot be considered for reasons stated in previous Newsletters.

No exams will be conducted in Australia after 30 Nov

PALMCARDS : The incorrect use of palmcards is a cause of concern among Examiners as there are some studios/teachers who still consider it suitable for the candidate to write the text of a speech/talk on the cards and to simply read the palmcards. Opportunities exist in the syllabuses to show the particular skill required to present a 'reading'. Some examiners report that teachers are requesting that examiners ignore the fact that the cards are 'read' due to the content not having been memorized as required. On the other hand, there are teachers who insist that their students use palmcards correctly. It is blatantly unfair therefore that penalties are not applied for incorrect use of palmcards. Examiners have asked that this issue be addressed for commonality of marking and assessment. In future, from this date, palmcards should contain only the following information: **headline notes, titles, names, dates, foreign words, quotations etc** and are to be submitted to the examiner prior to the talk/speech. Palmcards which contain the text of the content will incur a zero mark for that component of the examination.

Grade 6 Music: Please note that Ear Tests requiring the naming of consecutive notes after the tonic is played will be confined to the key of C major.

2013 GRADUATION CEREMONY is scheduled for 2pm on Saturday, 18 May at our new IMEB Headquarters: 3rd Floor, 255 Broadway, Glebe. Advice notification has been mailed out to teachers/studios with eligible candidates. However, all are welcome to attend this important occasion.



New Syllabus: 'ALL THE WORLD'S A STAGE'

This syllabus covers **World Theatre and Drama** and is a separate syllabus option from the other syllabi offered by IMEB (Speech and Drama, Public Speaking, Theatre Performance for the Individual, Speech and Drama Performance). This syllabus has been specifically designed following requests from some S and D teachers recently for a syllabus that focusses on world drama and a history of theatre in varied depth and breadth. It caters for Grade 1 – Associate Diploma level. This is an exciting and imaginative syllabus which should satisfy all students and teachers who have a passion for 'Theatre' in the broad context. This syllabus is due to be posted on the IMEB website. It comes into effect immediately.

Speech and Drama Association: Speech and Drama teachers are reminded that your Diploma students are recommended to join this Association where they are assured of a warm welcome. Contact Robyn Fraser on 9810 2449 for details.



Expansion: We continue to search for new contacts in New Zealand and S.E. Asian countries as well as other Australian states, so if any teachers can help us in these endeavours through your contacts and networks in these areas, we would be pleased to hear from you with your suggestions.

Reminder: To all music teachers that the graded works of composer Rosalind Carlson are highly recommended for use in IMEB examinations. They are graded in lists for instruments. For further information: 9653 1066 or 0417 307 313. Email orders to info@rosalindcarlson.co

For your consideration and attention:

1. Memorisation: Items which are set for 'memory' are expected to be memorised and not 'read'.

2. American accents: Directions for use of an American accent should be observed. There continue to be some fine 'American' performances presented with very strong characterization work and well-maintained American dialect by several but not all candidates. However, the success of presenting the scene, and the conviction of the characterization, is severely jeopardized when presented in Australian or Southern Standard English mode. (Imagine watching a production of 'Oklahoma' with no American accent.....)

NB. SPECIAL FEATURE: 'Out and About with ...'



Out and About with ... TONY VANCE PDipAGM, MAGTR

Tony was born in Broken Hill, NSW, the son of a concert Violinist Theo Vance. His early music education was highlighted with tuition from International concert pianist Jack Williams. Great success was achieved as leader of many fine jazz bands. In 1970 he became State manager of CBS. In 1980 he was appointed Australian General manager of Wurlitzer. While spending time at Wurlitzer USA, he studied the group teaching methods of Dr Larry Rast of Chicago University. The past 22 years have seen Tony involved in Music education in several schools in South Australia. In 2003 he was the prime mover in the SA Dept of Education for the introduction of Community Based Learning 'Practical Music' towards the SA Certificate of Education. He was instrumental in obtaining this qualification for the IMEB. Tony has been a member of the Australian Society of Music Education for 23 years.



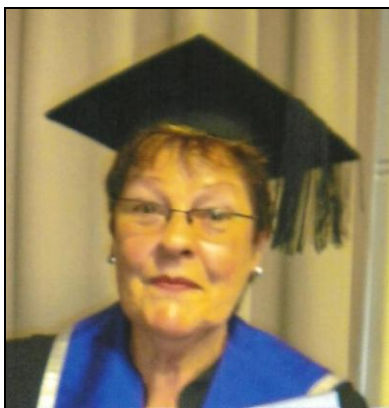
And out and about with ... KERIN BAILEY BMus(Hons)

Kerin was Guest of Honour at the Concert in Adelaide in October 2012 which launched IMEB into South Australia as well as introducing IMEB as a recognised organization in the SA Community Based Learning section of the SA Department of Education. Since **Jazzin' Around 1** was published in 1982 to widespread acclaim - over 18,000 copies sold in Australia – Kerin's pieces have become immensely popular with students and instrumentalists of all ages around the world. Kerin is also a fine pianist in his own right and entertained the audience with some of his most popular pieces including *Wiley Bosa Nova*.



Out and about also with ... ALAN WEST

FIMEB(MusEd), LIMEB(TD), LIMEB(Theory), FMusEd(ASMC), LMusEd(ASMC), DipSCSM(TD), IMEB(ExCert), AAGM(TD), AGM(ExCert), SA(RepIMEB)
 Alan began piano lessons at the age of seven progressing through all the grades and diplomas. He was accepted as a student of Isabel Penny, a well-known Adelaide theory teacher, where he completed studies in Theory, Harmony and Composition. Having a keen interest in organ, he studied with Knight Barnett, the organist at Adelaide's Regent Theatre. He eventually served seven years as President of the Theatre Organ Society of South Australia. Alan is a member of the SA Music Teachers' Association, the Institute of Music Teachers and the Independent Music Teachers of SA. He has been teaching piano, organ and theory from his studio for the past 45 years. He is the SA rep for IMEB.



And finally out and about with ... KAY ROSER

BA(UNE), GradDipEd(Music:UNE), AMusA(Piano), LIMEB(SingingTeacher). Kay studied piano with Hilda Bullock, Krystyna Niemotko and James Muir. She studied Voice with Miss Myra Lambert OAM of the Sydney Conservatorium. Kay is a professional accompanist and has played at all the major eisteddfods in NSW and has accompanied professional singers for their diploma examinations. As a singer, Kay has performed at many Masses as the cantor and has conducted the Easter and Christmas choirs and the Children's Choir as well as playing the organ for the Christmas Masses. Kay has also worked as a nursing sister, typist-controller at the Attorney General's Department in Canberra, and as a High School Music teacher. Kay opened her Music Studio in Sydney in 1982, and taught there until 2000. She relocated to the central Coast in 2001 and runs a happy and successful studio from there, preparing students for IMEB exams.

We wish to record our thanks to the Office staff, especially Tullia and Susan, who take your messages and assist in the successful and smooth running of the IMEB, and to Gloria Shen our new Bursar. Thanks also to Louis Liu our IT expert.

Thanking you once again for the generous hospitality extended to all our examiners

We wish us all a successful and smooth-running 2013.

Professor K Lee

Chairman

Dr Darrell Hines

Secretary

Dr Tim Smith
 Syllabus Consultant

And finally, here is the view across Victoria Park from the IMEB Office window for you to enjoy
 as much as we do when our noses aren't to the grindstone



IMEB

International Music Examinations Board

Patron: The Hon Bronwyn Bishop

c/- Australian International Conservatorium of Music
31-33 Allen Street, Harris Park, NSW 2150

Ph: 61 2 9637 0777 Fax: 61 2 9637 0222

Email: imeb@aicm.edu.au

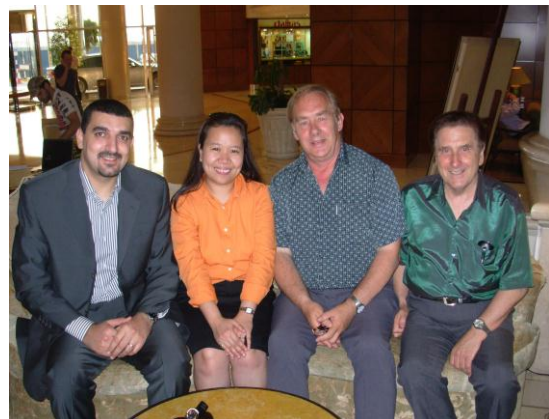
NEWSLETTER : December 2007

Greetings to all. The festive season is almost upon us, so this is the final IMEB Newsletter for 2007. We are still in the throes of the largest examination session we have conducted. Thank you to the teachers who have been with us from the beginning in 1999 and to those who have joined IMEB since.

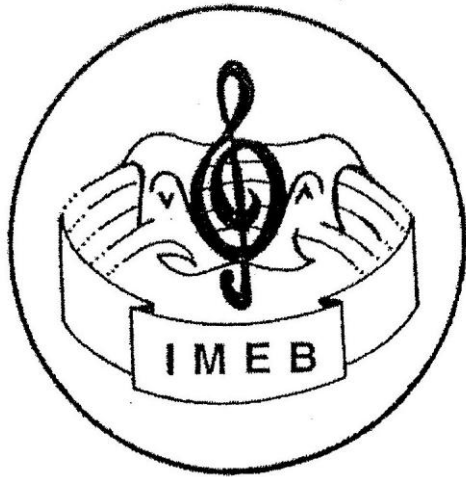
The IMEB continues to grow steadily, but we still need your assistance in spreading the word further.

New Fees: Despite the fact that Tim and Darrell still give many hours of work on a voluntary basis, we have found it necessary to finally raise the fees slightly in 2008 ... we are reluctantly acceding to advice from teachers that there needs to be an increase in the fees ... they have been the same for eight years whilst the operating costs have risen markedly. You will be pleased to note that the new schedule of IMEB fees are still far more reasonably priced than the other public examination systems.

Dubai: As you probably know by now, the IMEB was contacted by a large Music Institute in Dubai with a view to promoting the IMEB in that region.. Tim and Darrell recently travelled to Dubai (at our own expense we hasten to add) to meet with the Directors of the Music Institute and we had very successful discussions. We now look forward to the IMEB being promoted and implemented in the Middle East.



Directors of the Music Institute Dubai, Mr Hussein and Ms Shirley Aldana with Dr Tim and Dr Darrell



Theatre Performance for the Individual: It is disappointing to learn from several teachers that they haven't even yet glanced at this innovative Syllabus. May we recommend that you delve into this Syllabus and see just how suitable, exciting and motivating it is for those students who are multitalented in S/D, Music, Movement, Visual Arts and who love 'Theatre'.



*Talented singer, dancer and allround performer
Sheridan Mouawad from Dr Darrell's Studio*

We are sure that if you take a moment to analyse the Syllabus closely, you will find that it contains wonderfully sequential opportunities through Grades up to Diploma level for students who are developing in these related arts and who enjoy all aspects of performance studies.

Important Dates for 2008: The Graduation will take place at 10.30am, on Saturday, 3 May 2008 at St Patrick's Cathedral Hall, Victoria Rd, Parramatta.



*The multitalented Iskandar family of Barbara Gall's
'Baracourt Studio' in Sydney who sing, dance and act*

Please consider implementing this enjoyable and varied syllabus in your studio for your talented students.

Series 1 Theory Exams : 9am, Friday, 23 May 2008

The venue for Sydney candidates will be at AICM, 31-33 Allen Street, Harris Park. Country candidates will need to sit the Theory Exam at a suitable venue, with a supervisor, arranged by the teacher. Please advise me as early as possible of supervisor's name and address for mailing of the exam papers.

Series 1 Practical Exams : may be arranged with the IMEB by teachers. Once again may we please ask you to avoid requesting specific dates for the Practical Exams. Instead, please give us an indication of appropriate weeks or time frame that you would prefer, as early as possible, and we will do our best to accommodate you as usual.



Dominic and Joseph Bourke are multitalented performers. Joseph (right) has featured recently with Opera Australia in 'Tannhauser' and 'Carmina Burana' at Sydney Opera House and will appear in the forthcoming opera 'Carmen' in 2008. He is also a soloist with St Mary's Cathedral Choir in Sydney. Both students are from Dr Darrell's Studio.

NB. SPECIAL FEATURE: 'Out and About with ...'

It is planned to incorporate into each Newsletter an article profiling a member of IMEB by way of introduction to the wider IMEB community entitled:

Out and About with ... SHIRLEY JACKSON, MA,
FIMEB, FAGSPT, LTCL, ATCL, LSDA, ASDA, DPCW, LAGSCD



Shirley has been teaching Speech and Drama at Knox Grammar School in Wahroonga for 18 years. Previously she taught at Abbotsleigh Girls School for 12 years. Shirley is an Examiner for IMEB and is a highly regarded Adjudicator for both metropolitan and country eisteddfodau. She has also performed and sung professionally and appeared with *Tony Price Productions* plus taking leading roles with various Musical Societies in Sydney. Her interests include travel, oil painting, china painting, writing and, of course, singing. She has written a book of children's poems and has continued to exhibit her artworks in recent years.

Expansion: We are constantly searching for new contacts in New Zealand and S.E. Asian countries as well as other Australian states, so if any teachers can help us in these endeavours through your contacts and networks in these areas, we would be pleased to hear from you with your suggestions.

Speech and Drama Association: Speech and Drama teachers are reminded that your Diploma students are recommended to join this Association where they are assured of a warm welcome. Contact Robyn Fraser on 9810 2449 for details.



Reminder: To all music teachers that the graded works of composer Rosalind Carlson are highly recommended for use in IMEB examinations. They are graded in lists for instruments.

For your consideration and attention:

1. Memorisation: Items which are set for 'memory' are expected to be memorized and not 'read'.

2. Palmcards: Please try to encourage students to use palmcards properly. ie: as cues only, rather than recording and reading the whole item as, apart from incorrect use, the reading practice detracts from an effective communication delivery.

3. American accents: Directions for use of an American accent should be observed. There have been some fine 'American' performances presented this year with very strong characterization work and well-maintained American dialect by several but not all candidates. However, the success of presenting the scene, and the conviction of the characterization, is severely jeopardized when presented in Australian or Southern Standard English mode. (Imagine watching a production of 'Oklahoma' with no American accent.....)



Jan Creer's drama student Nadine Koeberler gives an emotive interpretation of Tennessee Williams' character Blanche

4. British dramatists v Shakespeare: Please note that in the Associate Level of Speech and Drama, Item 3 lists an 'extract by any British playwright demonstrating appropriate dialect.' Therefore it is expected that the dramatic extracts would be selected from the wide range of 'British' playwrights whose works are well-known and accessible (cf Appendix) rather than 'Shakespeare' which is deliberately offered for presentation in Grade 7, Item 7. Admittedly the bard was 'British', but Britain incorporates England, Ireland, Scotland and Wales and there is a wealth of material to choose from requiring different 'British' dialects (eg Cockney, Irish, North Country, Welsh, Midlands etc). 'Shakespeare' is generally regarded as a separate, universal and specific genre and often resulting in a very stylized form of delivery and performance irrespective of where in the world it is performed. The concept behind the various distinct lists offered at the higher levels in IMEB Speech and Drama requiring different dialects, character styles and locations, is for the candidates to study and become familiar with the wide ranging repertoire available (through libraries, schools, studios and the Internet) and to acquire the skills necessary to perform as accurately as possible.



TV Promotion: Joy Hruby OAM, DipMusIMEB(HC) has once again kindly offered to promote both the IMEB and AICM on her TV Channel 31 programme 'Joy's World' which is aired three times a week to an ever-increasing audience. There were several enquiries following a broadcast of her interview with us at the end of 2006 and we are most grateful to Joy for this opportunity for further publicity. Joy Hruby is also a registered IMEB teacher .



Joy Hruby OAM in her Channel 31 studio

Fellowships: 2007 saw the first of our Fellowship candidates presenting for examination and offering an incredibly high standard of performance in Pianoforte, Voice and Instrumental.



Louisa Sindel-Marshall included a concerto composed by her husband Paul in her IMEB Saxophone Fellowship Performance



Renowned singing teacher Paula Clarkstone (left) with Judith Malone after her IMEB Singing Fellowship Performance

Diplomates: In addition, there is an ever increasing number of high quality Diploma candidates in both Music, Performance and Speech and Drama and we hope for a good attendance at the Graduation on 3 May 2008.



Timothy Steains achieved High Distinction for his IMEB Singing Diploma. His teacher is Dr Darrell



Neva Elasa Setiabudi with teacher Dr Darrell and her parents who flew from Indonesia to be present at her IMEB Singing Diploma Recital

Enclosed: You will find this IMEB flyer for you to display in your studio



And finally: Congratulations to all teachers on the excellent work being presented for examination. You are truly maintaining the integrity and high standards expected by IMEB. Thank you also for the ever-increasing number of entries.



from our Chairman, Professor Kyunghee Lee, who joins with us in sending you best wishes for the festive season and a successful, safe and prosperous 2008.

Professor K Lee
Chairman

Dr Darrell Hines
Secretary

Dr Tim Smith
Syllabus Consultant

Merry Christmas and enjoy a good rest!

